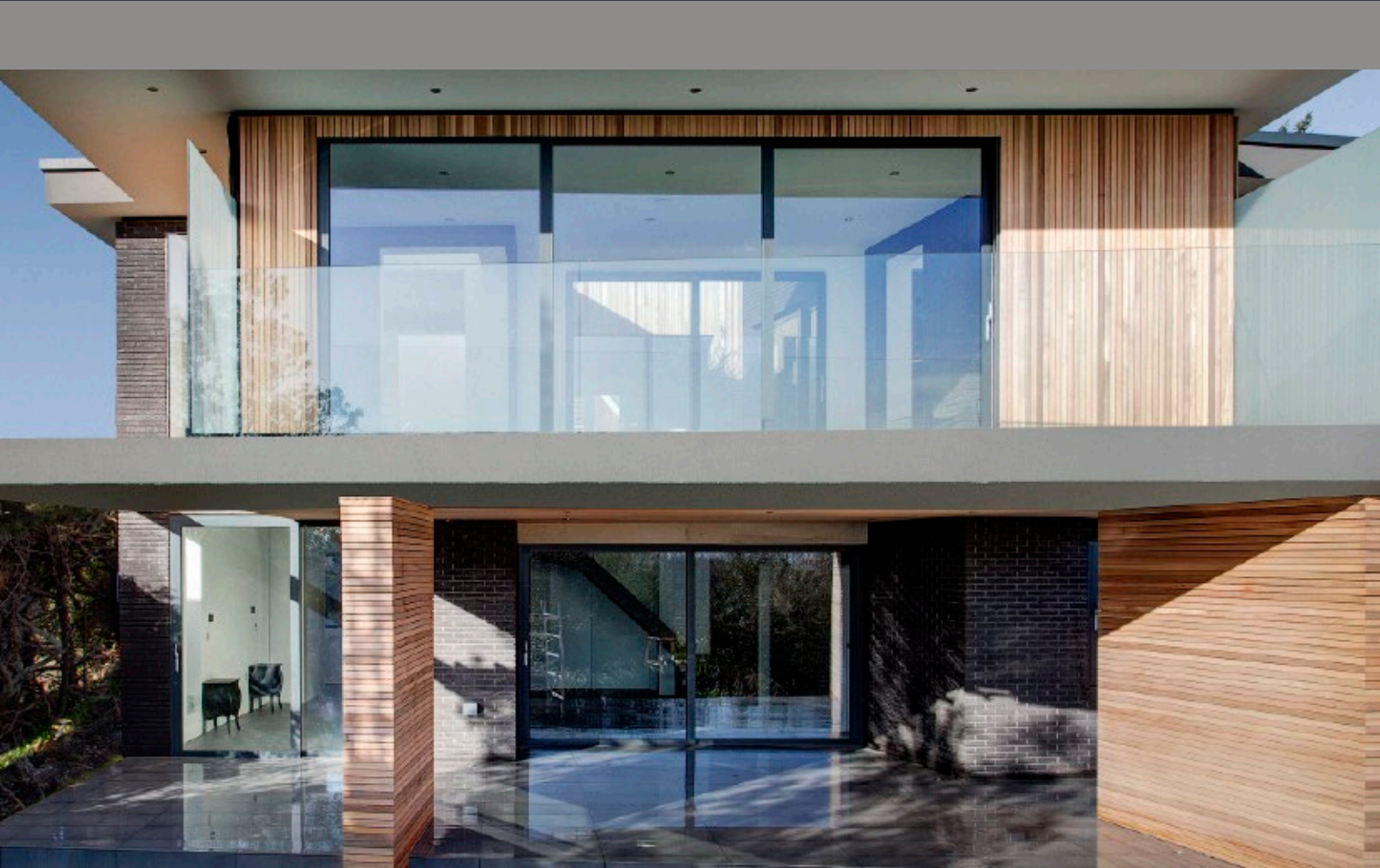


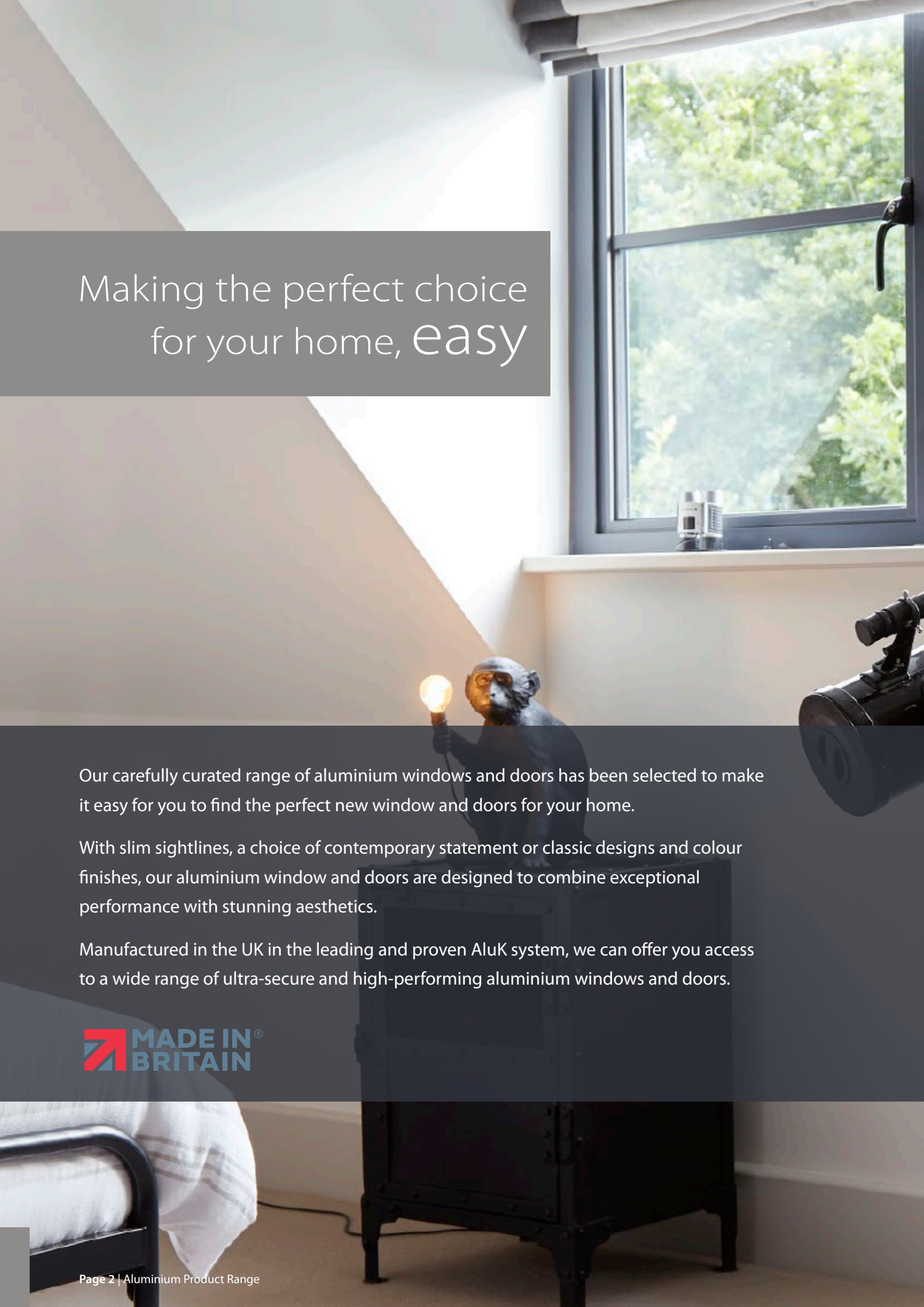


Established 1979

# Aluminium Range

Uncompromised style and performance



A bedroom scene with a window, a monkey holding a lightbulb, and a telescope. The window is on the right, showing a view of green trees. A monkey is sitting on a black chest of drawers in the center, holding a glowing lightbulb. A telescope is visible on the right side of the chest of drawers. The room has a sloped ceiling and a white wall.

# Making the perfect choice for your home, *easy*

Our carefully curated range of aluminium windows and doors has been selected to make it easy for you to find the perfect new window and doors for your home.

With slim sightlines, a choice of contemporary statement or classic designs and colour finishes, our aluminium window and doors are designed to combine exceptional performance with stunning aesthetics.

Manufactured in the UK in the leading and proven AluK system, we can offer you access to a wide range of ultra-secure and high-performing aluminium windows and doors.





## Choose from

Doors	4-5
Bi-folding doors	6-9
Inline sliding patio doors	10-11
Entrance and French doors	12-13
Colour and finish options	14-15
Sustainability	16-17
Windows	18-23



Connecting spaces.

**Should I choose a bifold, inline sliding or French door?**

**A connection to outside space is more important than ever. We offer a wide range of design options so that you can choose the perfect way to connect your inside and outside spaces.**

# What's right for your home and how you live in it?

**Bi-folding doors** concertina back on themselves to provide a seamless connection between inside and outside spaces.

**Inline sliding patio doors** give you the maximum expanse of uninterrupted glass in your door, giving you a great year-round connection to the space outside your home.

**French doors** combine classic design with a high degree of flexibility. Ideally suited to smaller openings, they also provide a great solution for higher traffic areas.





Designed to take all  
life has to throw at it



## The AluK Optio BSF70 Bi-folding door

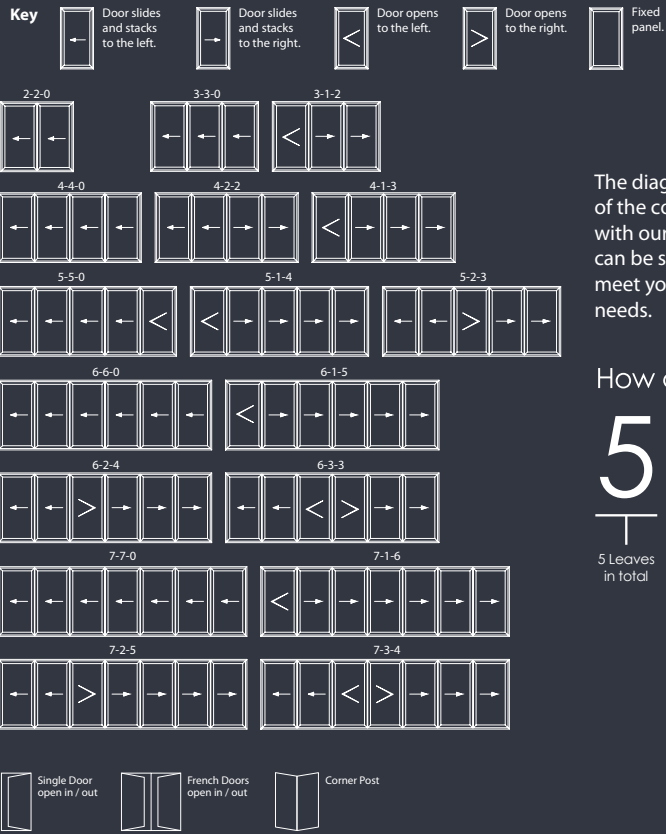
Manufactured by our highly skilled team, the AluK BSF70 offers maximum design flexibility spanning openings of up to 7m wide by 2.5m high. Ultra-secure, it's available in an up to seven-panel configuration with multiple opening and closing and low threshold options.

\*imagery for illustrative purposes only





# Configurations



The diagrams shown illustrate some of the configurations achievable with our bi-fold door system. Panels can be stacked inside or outside to meet your configuration and space needs.

How configurations work



## Why choose the AluK BSF70 Bi-folding door?

- Slim sightlines with a choice of chamfered or square detail to all external doors and panels
- Choose from dual colour options and a wide range of finishes (see pages 14-15)
- Uses the latest polyamide thermal breaking technology to deliver an enhanced level of thermal performance
- Ultra-secure, including testing to PAS24 and certified under the police approved Secured by Design Scheme
- Unique AluK 'pop-out' handle delivers clean internal lines and supports flat stacking of door leaves
- Heavy duty rollers guarantee smooth and reliable operation
- Spans openings of up to 7m wide X 2.5m high
- Severe weather tested
- 10-year manufacturer's guarantee





Picture frame slim sightlines and advanced thermal performance



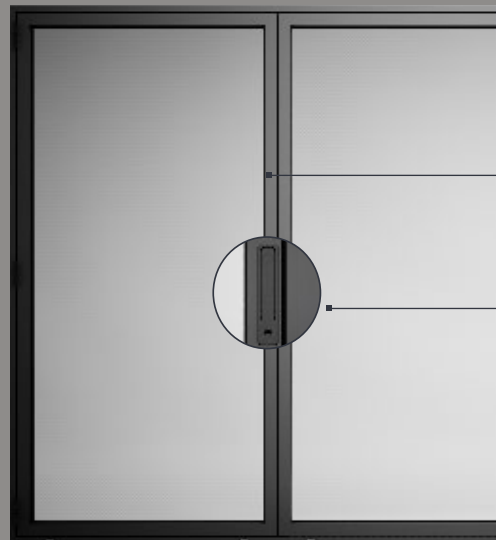
## The AluK F82 Luminia Bi-folding door

The AluK is a next generation bi-folding door, defined by symmetrical sightlines, which create a minimalist picture-frame aesthetic. It also features a slim interlock or door meet, maximizing the glazed area of each opening panel.

We're able to combine this with the ultimate in thermal performance achieving u-values (the measure of heat loss where the lower number represents a higher level of energy efficiency) of as low as  $0.9W/m2^*$

\*triple-glazed

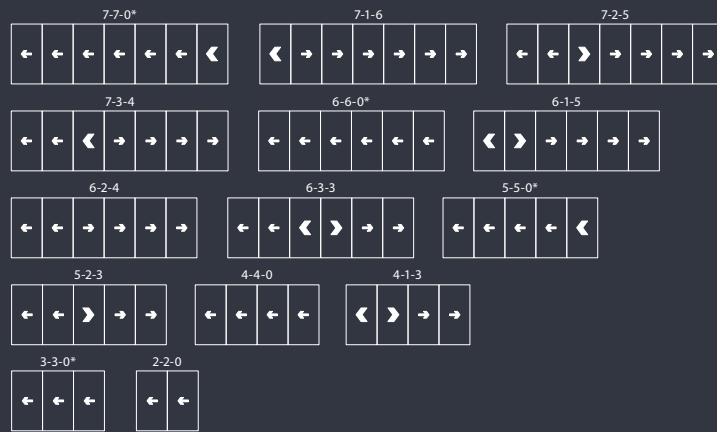
\*imagery for illustrative purposes only





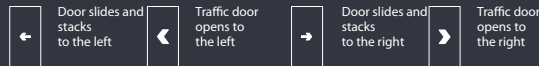


# Configurations

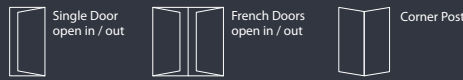


\*Opposite handling available on all configurations. For more options, refer to the Technical Manual.

## KEY



## OTHER OPTIONS AVAILABLE



The diagrams shown illustrate some of the configurations achievable with our bi-fold door system. Panels can be stacked inside or outside to meet your configuration and space needs.

## How configurations work



## Why choose the AluK F82 Luminia Bi-folding door?

- Perfect for connecting your home and garden
- Effortless operation
- Class leading u-values as low as 0.9W/m<sup>2</sup> (triple-glazed)
- Contemporary design with symmetrical 97mm sightlines
- Ultra-secure, including testing to PAS24 and certified under the police approved Secured by Design Scheme
- Slim 122mm interlock/door-meet
- Choose from dual colour options and a wide range of finishes (see pages 14-15)
- Unique pop-out 'T' handle and flush traffic door handle
- Low threshold option
- 10-year manufacturer's guarantee





Minimal sightlines  
and maximum light



## The AluK Optio BSC94 Inline Sliding Patio door

With a contemporary architectural aesthetic and maximum glazed area, aluminium inline sliding doors are a highly popular choice for home improvement projects.

The AluK BSC94 delivers maximum design flexibility with individual panel heights of up to 3000mm and maximum weights per panel of 400kg, allowing you to bring more light into your home.

An ultra-slimline option takes minimalist sightlines a step further, with a 45mm interlock/door meet giving you uninterrupted year-round views to your outside space.

\*imagery for illustrative purposes only



# Configurations

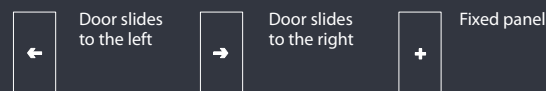
## DUAL RAIL



## TRI RAIL



## KEY



### Why choose the AluK BSC94 Inline Sliding Patio door?

- Year-round connection between your home and garden
- Maximum glazed area and minimum interruption of views bringing more light into your home
- Can be supplied in an individual panel height of up to 3000mm and 400kg in weight, giving you the scale to tackle even the largest of projects
- Space-saving slide and lift-and-slide opening
- Slim 45mm interlock/door meet option – minimise disruption to your view
- Uses the latest polyamide thermal breaking technology to deliver an enhanced level of thermal performance
- Security tested to PAS24
- Choose from dual colour options and a wide range of finishes (see pages 14-15)
- 10-year manufacturer's guarantee





Classic to the contemporary



## Entrance and French doors

### The AluK Optio 58BD Entrance door

The 58BD Entrance door combines minimalist sightlines and a cool architectural aesthetic. It's also highly versatile, making the 58BD Entrance perfect for installation as a statement front or back door. Multi-point locking mechanisms and PAS24 security options, also deliver reassurance that your new door is designed to stand-up to would-be intruders, helping to keep your home safe and secure. The 58BBD Entrance door is available in a choice of glazed or solid panel options.

\*imagery for illustrative purposes only



58BD Entrance



### The AluK 58BD Flush Entrance door

The Optio 58BD Flush Entrance Door offers a minimalist and contemporary aesthetic. It delivers exactly the same high performance and enhanced security as our standard door but with a modern twist, so that the opening door sash finishes flush with the outer frame, also offering a match into our flush window range (see pages 20-21)

### The AluK 58BD French Door and Flush French door

We offer the same design flexibility across our French door offer with a choice of standard or flush finish options. Versatile and defined by an understated elegance, French doors are a timeless and highly practical option for your home.

### Why choose the AluK Optio 58BD Entrance/Flush finish entrance doors

- Choice of standard or flush finish
- High performance multi-point locking keeps unwanted visitors out
- PAS24 tested and certified under the police approved Secured by Design Scheme
- Uses the latest polyamide thermal breaking technology to deliver an enhanced level of thermal performance
- Choose from dual colour options and a wide range of finishes (see pages 14-15)
- 10-year manufacturer's guarantee



58BD Flush Entrance



## A flexible colour palette

**Our aluminium window and door ranges are supplied in a comprehensive choice of colours, including dual colour and ultra-tough and durable, textured finishes.**



Our aluminium window and door ranges are supplied in a comprehensive choice of colours, including dual colour and ultra-tough and durable, textured finishes. AluK does this using a special flash-anodising process.

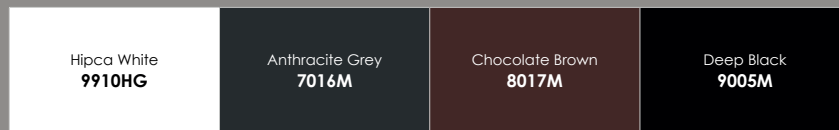
Completed ahead of powder coating this creates a protective anodised layer of aluminium oxide providing a better substrate for powder coating but also preventing filiform corrosion.

It means that our window and door range is supplied in a marine grade finish as standard and guaranteed for 10-years.

## Standard colour options

Our standard colour ranges include a choice of white, anthracite grey, chocolate brown and deep black, plus dual colour anthracite grey-on-white and deep black-on-white.

### STANDARD COLOURS



### DUAL COLOURS



## Special colours

We can also offer you access to a range of textured finish options and supply any RAL colour on special order, giving you the flexibility to pick out the perfect shade to compliment the individual character of your property.





## Sustainability: infinite possibilities

### Did you know?

In choosing aluminium windows and doors, you're specifying one of the most sustainable window and door framing materials. Aluminium can be recycled endlessly without losing performance, while using recycled aluminium saves up to 90% of the energy used in the processing of mined product.





## Advanced thermal performance

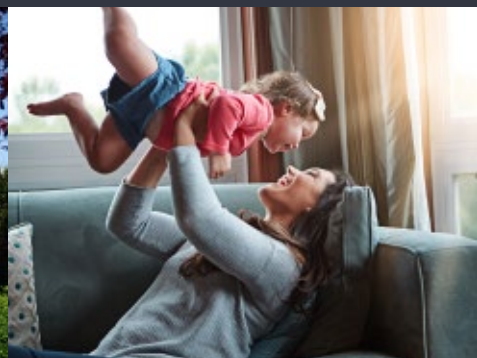
You can also feel good about the fact that your new doors and windows have been designed to help you save energy and reduce your own, and the carbon footprint of your property today.

Our entire window and door range uses leading-edge polyamide thermal technology. This reduces heat loss by creating a thermal barrier between the outside and inside of your window and door frames.





Heritage roots. A minimalistic and contemporary edge



## The AluK Optio 58BW ST

Originally designed as a replacement for period steel-type windows, the AluK Optio 58BW ST offers an ultra-slim 46mm sash, creating a minimal sightline.

Despite its origin as a heritage replacement, this minimalist offer can also be designed to create a contemporary aesthetic, while maximising the glazed area, it allows you to bring more light into your home.

\*imagery for illustrative purposes only



#### Flat

A cleaner and contemporary design, creating a minimalist contemporary appearance



#### Chamfered

A simple design with an angled fall away from the glass line



#### Heritage

A more ornate design replicating period steel window installations

### Why choose the AluK Optio 58BW ST window

- Minimal sightlines with a 46mm sash
- Can be used as a steel window replacement or contemporary installation
- Advanced thermal performance using the latest polyamide thermal breaking technology to deliver an enhanced level of energy efficiency with an 'A' Window Energy Rating and u-values as low as 1.5W/m2\*
- Choose from dual colour options and a wide range of finishes (see pages 14-15)
- PAS24 tested meeting and exceeding requirements under Building Regulations Part Q
- Severe weather tested
- 10-year manufacturer's guarantee

\*Dependent on glass combination



An understated elegance



## The AluK Optio 58BW Flush

We've also added AluK's Flush variant of the 58BW ST to our range. In common with the ST it has an ultra-slim 46mm sash, which combined with a flush finish, has been developed to create a clean and contemporary appearance.

It can also be combined with different colour options to create a more subtle and understated finish.

Like the rest of our window and door range, it features multi-point locking and cutting edge thermal breaking technologies.

\*imagery for illustrative purposes only





### Why choose the AluK Optio 58BW Flush window

- Sash and outer frame align flush against each other to create a clean and contemporary finish
- Advanced thermal performance using the latest polyamide thermal breaking technology to deliver an enhanced level of energy efficiency with an 'A' Window Energy Rating and u-values as low as 1.5W/m<sup>2</sup>\*
- Choose from dual colour options and a wide range of finishes (see pages 14-15)
- PAS24 tested meeting and exceeding requirements under Building Regulations Part Q
- Severe weather tested
- 10-year manufacturer's guarantee

\*Dependent on glass combination



## Form and function



## The AluK Optio 58BW Tilt-Before-Turn

Sophistication meets practicality in the Optio 58BW Tilt-Before-Turn window.

Sharing the same minimalistic sightlines of our Optio window range, our Tilt-Before-Turn window provides safe and secure ventilation, pivoting from the bottom of the window, to let fresh air into your room from the top, making it an ideal choice for families with young children.

The mechanism also allows the window to be opened into the room to increase airflow and making cleaning easy!

\*imagery for illustrative purposes only



### Why choose the AluK Optio 58BW Tilt-Before-Turn window

- Pivots from the bottom of the window to provide safe and secure ventilation. Ideal for families with young children
- Also opens into the room to provide increased ventilation and for ease of cleaning
- Minimal sightlines
- Advanced thermal performance using the latest polyamide thermal breaking technology to deliver an enhanced level of energy efficiency with an 'A' Window Energy Rating and u-values as low as 1.3W/m2\*
- Choose from dual colour options and a wide range of finishes (see pages 14-15)
- PAS24 tested meeting and exceeding requirements under Building Regulations Part Q
- Severe weather tested
- 10-year manufacturer's guarantee

\* Dependent on glass combination



2-6 Huxley Close | Wellingborough NN8 6AB  
T: 0800 622 716 E: [info@tkhi.co.uk](mailto:info@tkhi.co.uk) [www.tkhi.co.uk](http://www.tkhi.co.uk)